

## **Bid Notice**

In accordance with Sections 262.021 through 262.037, inclusive, of Vernon's Texas Codes Annotated Local Government Code, the County of Marion, State of Texas, hereby gives public notice of its intent to seek bids.

Sealed bids are to be received in the Office of the County Auditor, 119 W Lafayette Suite 4, Jefferson, TX 75657, by 9:00 a.m. May 30, 2019. Clearly mark bids 'storage building. Bids will be opened in commissioner's court at 9:30 a.m. that day.

The items to be bid are as follows: one 30'x50'x12' metal building.

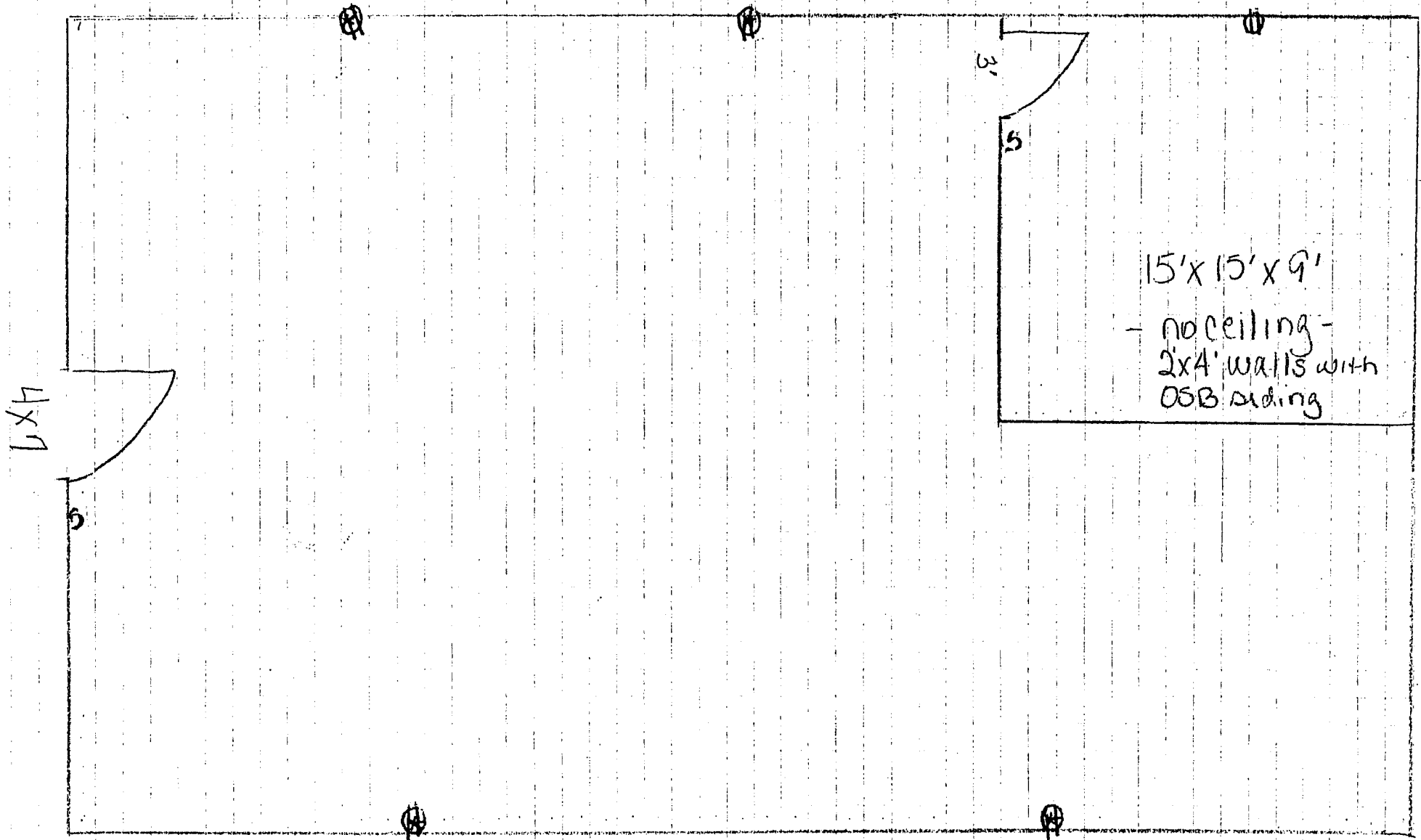
The specifications for same may be obtained in the Office of the County Clerk during normal office hours. For questions contact Vickie Smith, County Clerk, 903-665-3971. The methods of payment and bond requirements are to be in accordance with the terms stated in the general specifications.

By: Shanna Solomon  
Marion County Auditor

To be run the weeks of: May 9th & May 16<sup>th</sup> in Public Notices section  
Bill county auditor

Project

Description	Qty	Cost	Total
<p>Construct 30' x 50' x 12' insulated metal building to include the following:</p> <ul style="list-style-type: none"> <li>- R-panel tan metal with basic trim package</li> <li>- standard 4" slab with rebar</li> <li>- standard 3" white vinyl back insulation</li> <li>- one 4' x 7' walk thru door on gable end</li> <li>- 8" I-Beam columns</li> <li>- 10" I-Beam trusses</li> <li>- 8" purlins</li> </ul> <p>Build one 15' x 15' 2 x 4 stud wall non-insulated room with 9' walls constructed out of OSB, no ceiling, not painted, with one 3" walk-thru door with knob lock and light switch by door</p> <p>Install 3-ton Samsung Mini Split system with two 18,000 BTUH high wall evaporators, condensate drains, two remote controls</p> <ul style="list-style-type: none"> <li>-Run 75' underground feeder in 1 1/4" PVC conduit from service pole to new building</li> <li>- Install eight 8' T8 (LED) tandem flourescent lights</li> <li>- One 220 volt electrical opening for mini split a/c unit</li> <li>- Four 110 volt electric outlets</li> <li>- One Atlas LED wall pack with photocell for exterior of building</li> <li>- One 60 amp in-door panel</li> </ul> <p>(all electrical to be in EMT conduit)</p> <p>Once construction is started, if not inhibited by inclimate weather, project will be completed in 90 days Not responsible for any dirt work or site preparation</p>			
Thank you for your business!	<b>Total</b>		



15' x 15' x 9'  
- no ceiling -  
2x4' walls with  
OSB siding

30' x 50' x 12'